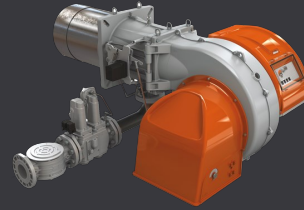


Burners

CODE 18130010

**TBG 510 LX MC 50HZ**



Gas burner compliant with European standard EN676. Pneumatic operation at two progressive stages.

Continuous modulation operation by installing P.I.D. controller in the control panel (to be ordered separately with modulation probe).

Modulation ratio 1:6.

Gas burner with low NO<sub>x</sub> and CO emissions in accordance with European standard EN676: class 3.

Regulating combustion air and blast-pipe.

Combustion air intake with throttle damper. Air flow adjustment with electric servomotor.

Combustion air intake designed to achieve optimum linearity of the air gate opening.

Fully closing air damper on shutdown to avoid loss of heat through the chimney.

Maintenance facilitated by the possibility of removing the combustion head without having to remove the burner from the boiler.

Sliding boiler coupling flange to adapt the blast-pipe to the various types of boilers.

Easy maintenance thanks to the two-sides hinge which allows the removal of the combustion head without having to remove the burner from the boiler.

Device made of sound-absorbing material to reduce fan noise.

Gas train CE version consisting of valve operation and safety pneumatically driven , minimum pressure switch , pressure regulator and gas filter

Possibility to choose gas train with valve tightness control.

Fail proof connectors for burner/gas train connection

Gas train exit: high/low.

Flame detection by ionisation electrode with connector for micro amp meter.

Control panel with display diagram for working mode with indication lights .

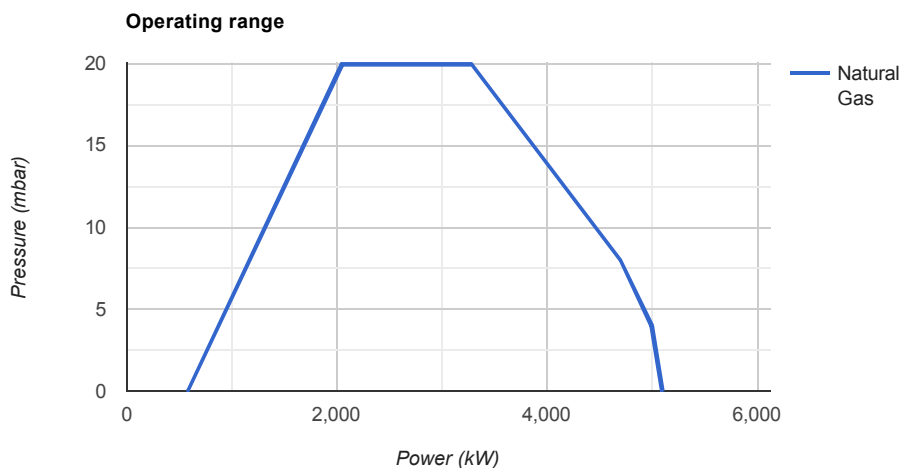
Electric control board in light alluminum alloy with IP55 protection rating

7-pole socket for burner electric and thermostatic supply.

4-pole socket for second stage control or for the connection of the PID electronic regulator.

Electrical system with protection rating IP54.

**Operating range**



## Technical data

Tipo articolo	Gas burner compliant with European standard EN676. Pneumatic operation at two progressive stages.
Funzionamento modulante	Continuous modulation operation by installing P.I.D. controller in the control panel (to be ordered separately with modulation probe).
Rapporto Modulazione	Modulation ratio 1:6.
Emissioni Lato Gas	Gas burner with low NOx and CO emissions in accordance with European standard EN676: class 3.
Regolazione aria e testa	Regulating combustion air and blast-pipe.
Regolazione aria	Combustion air intake with throttle damper. Air flow adjustment with electric servomotor.
Ingresso aria	Combustion air intake designed to achieve optimum linearity of the air gate opening.
Chiusura aria	Fully closing air damper on shutdown to avoid loss of heat through the chimney.
Fuel	Metano
Operation	Modulante Pneumatico
Minimum Thermal Power (kW) to ErP	580
Maximum Thermal Power (kW) to ErP	5100
Min flow rate (Sm <sup>3</sup> /H)	61
Max flow rate (Sm <sup>3</sup> /H)	540
Manutenzione facilitata	Maintenance facilitated by the possibility of removing the combustion head without having to remove the burner from the boiler.
Flangia	Sliding boiler coupling flange to adapt the blast-pipe to the various types of boilers.
Cerniera	Easy maintenance thanks to the two-sides hinge which allows the removal of the combustion head without having to remove the burner from the boiler.
Antirumore	Device made of sound-absorbing material to reduce fan noise.
Gas Train	Gas train CE version consisting of valve operation and safety pneumatically driven , minimum pressure switch , pressure regulator and gas filter
Kit CTV	Possibility to choose gas train with valve tightness control.
Connettore rampa gas	Fail proof connectors for burner/gas train connection
Uscita della rampa gas	Gas train exit: high/low.
Controllo fiamma	Flame detection by ionisation electrode with connector for micro amp meter.
Quadro comandi	Control panel with display diagram for working mode with indication lights .
Quadro comandi	Electric control board in light alluminum alloy with IP55 protection rating
	7-pole socket for burner electric and thermostatic supply.

Presa 4 poli	4-pole socket for second stage control or for the connection of the PID electronic regulator.
Protezione elettrica	Electrical system with protection rating IP54.
Electric power supply type	AC
No. of Phases	3N
Power Supply Voltage (V)	400
Power Supply Frequency (Hz)	50
Fan Motor Power (kW)	11
Weight with packaging (kg)	184.8
Width (mm)	1500
Depth (mm)	1150
Height (mm)	970